

Chrome Plating Service for ABS plastic Parts

Over 13 years experience in plastic chrome plating, especial focusing on plastic part chrome plating for home appliance & electric appliance.

High quality, competitive price, fast delivery, best service!

1. Benefits of plastic product with chrome plating:

- Attractive looking: it greatly adds value of your products.
- Wear resistant: as chrome is a metal rather than a plastic, it is very much wear resistant than the only plastic. So it can be applied where a part might be handled repeatedly, such as a refrigerator handle & shower handset.
- Electrically conductive: by chrome or nickel plating a part it is possible to give a plastic component the ability to conduct electricity.

2. Electro-chrome plating Line picture illustration



3. Plastic part with chrome plating process:

The first step to be carried out is to etch the surface with a chemical so that the subsequent layers of nickel and chromium will adhere.

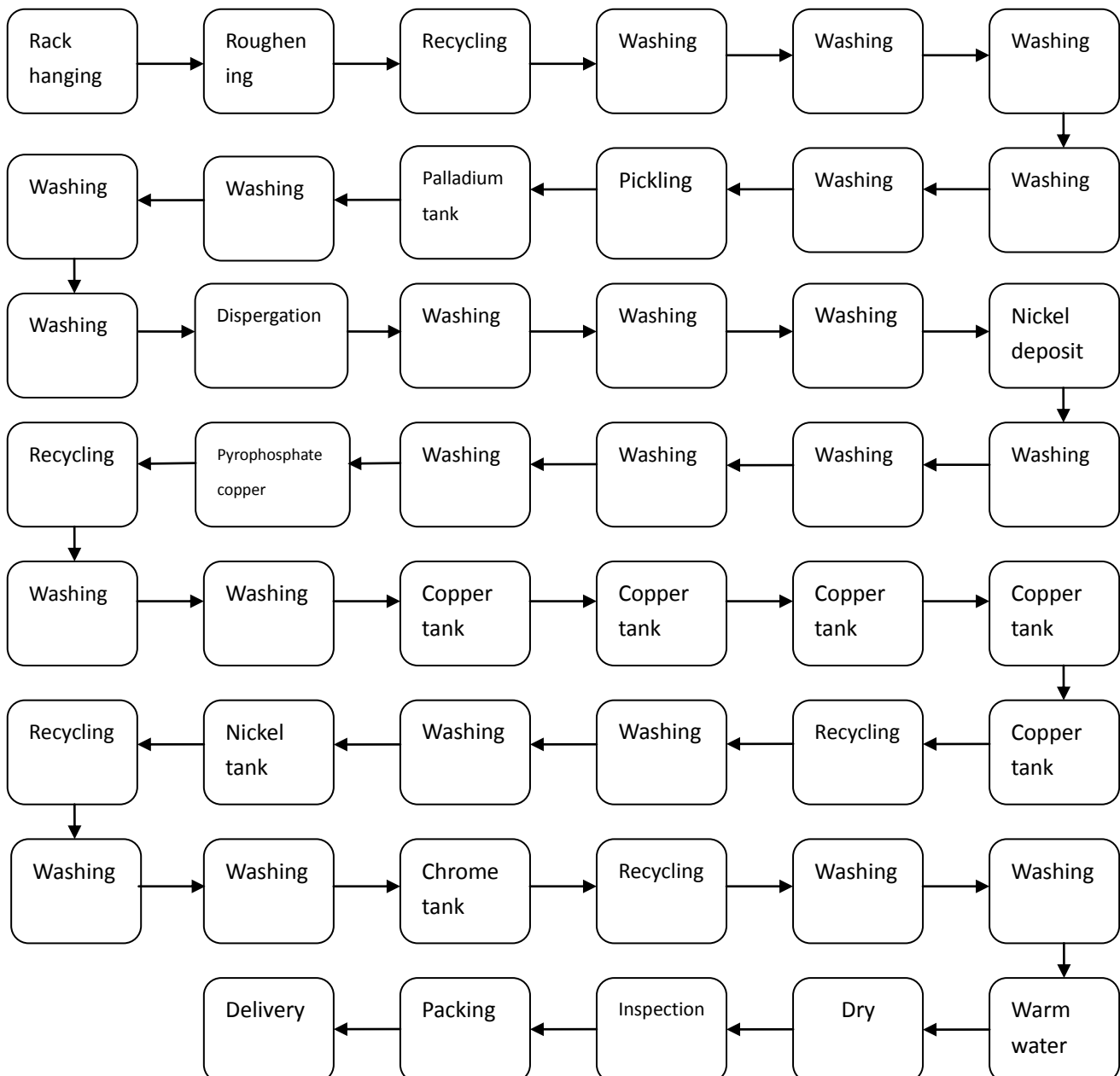
The next process that will be carried out is to attach a layer of nickel (with a catalyst) onto the surface of the part. This layer of nickel will be what becomes electrically conductive and allows the chrome to be electroplated to it, also it helps minimize the pitting and cover micron pinholes on the surface of part.

Once the layer of nickel has dried the part can be plated by electroplating. The step of electroplating metal as pyrophosphate copper firstly, to make the micro accidented surface become flat; copper secondly, to enhance its shinning, Nickel thirdly, to make part become wear resistant and corrosion resistant; chrome finally, to increase the hardness of the part.

Finally the part is removed from the solution and left to cool & dry.

To ensure good chrome plating quality finish the part must be injected to a very high quality. Any defects that are on the surface of the plastic components will stand out after plating. Also, any stresses in the plastic components will show up as a defect when chrome plated. As chrome will form a thinner layer over the defects and, in effect, magnify the problem. For this reason rigorous quality checks are carried out on all products during our production.

Plastic chrome plating process chart:



4. Plastic chrome plating applications:

Chrome plated plastic part is widely used in all industries, typical applications are:

- Home appliance decoration, almost all home appliances including chrome plated plastic part as to increase its beauty looking, such as refrigerator door handle, front loading washing machine door frame etc.
- Sanitary parts such as shower faucet etc.,
- Automobile plastic parts like handle, air duct, lamp cover etc.
- Sundry goods plastic parts

5. Product Showing



6. Competitive Advantage:

- Integrated service: including plastic injection mould and metal mould opening, plastic injection, metal parts production, plastic chrome plating, assembly, package, shipment.
- Cost competition: our factory located in Yuyao, Ningbo, China which is the key wholesale & logistics centre for plastic resin, the industry of plastic mould fabrication & plastic injection are very developed. This enables us to provide the most competitive prices; we serve customers efficiently without adding a large overhead to their costs.
- Service and quality control competition: we are very professional and experienced in the electro chrome plating & plastic industry; this enables us to think comprehensively to our customers during project negotiation, all key quality control processes are under management.
- IP protection competition: we understand that in order to manufacture our customer's products, we must have access to designs and product details. We take the responsibility of safeguarding this intellectual property extremely seriously.